

2008-2009 Corporate Sponsors to Date

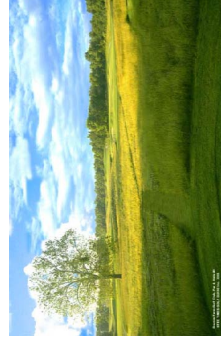
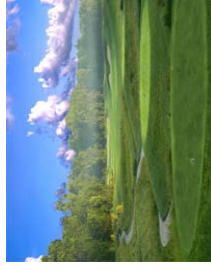
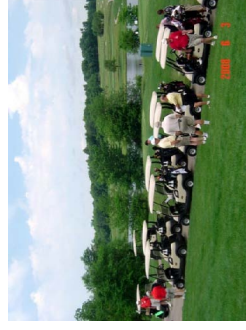
GOLD

Image Floorings LLC

KANSAS CITY CHAPTER
IFMA

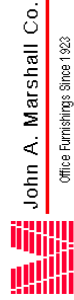


**2008 KC IFMA
Golf Tournament Outing**



2008-2009 Corporate Sponsors to Date

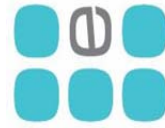
BRONZE



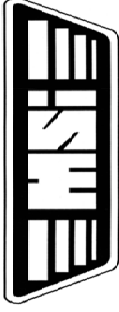
Lees

SILVER

Interface FLOR
COMMERCIAL



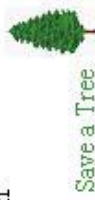
encompas



Newsletter

August 2008

Please note: If you wish to receive your Newsletter via email only, and not also via US Mail, please contact info@kcfifma.com



Save a Tree

KCIFMA UPCOMING SCHEDULE OF EVENTS

Date	Time	Event Name	Location
8-12-15	4 Days	The Business of FM Course	IFMA Headquarters 1 E. Greenway Plaza, Ste 1100, Houston, Texas
8-19	5:00-7:00	Tour, Federal Reserve Bank	1 Memorial Drive Kansas City, MO
9-9-10	2 Days	SAME / IFMA Facilities Management Workshop	Washington, D.C.
9-16	4:30 - 6:00	Tour, Applebee's Corporate Office	11201 Renner Blvd. Lenexa, KS
9-18	6:00 PM	USGBC - Sustainable Film Series - e3 design	Screenland Theatre 1656 Washington, Kansas City, MO
9-25	4:30 - 6:00	USGBC - get into green	Bartle Hall Ballroom
		Monthly Program Meeting	IFMA Education Program
		Webinar	Other Event

**Kansas City Chapter
Monthly Program
August 19, 2008**

Tour of the
Federal Reserve Bank of Kansas City
1 Memorial Drive
Kansas City, MO
5:00 - 7:00 p.m.

This is a secured building requiring advanced authorization for access.

Online RSVPs must be received by Thursday, August 14th.

Please log on to www.kcifma.com
And get the information you need to attend.



Have you registered for **WORLD WORK-PLACE?**
go to www.kcifma.com

you

October 15 - 17, 2008
Dallas Convention Center
Dallas, Texas

For Details about and to Register for KCIFMA Activities, visit the website at www.kcifma.com

**WELCOME to our Chapter's
Newest Members**

- Krista Becker**
- P Dean Biggs**
Wilson Building Maintenance
- Gary Hogsett**
Tetra Tech
- David Kopmeyer**
Cort Furniture Rental
- Thomas Kowalczyk, CPMM**
Erickson Retirement Communities
- Melissa Lising**
Amic Inc
- Louis O'Neal**
Polytainers Inc
- Anita Oberwortmann**
Wilson Building Maintenance
- Melanie Riley**
Servpro
- Joseph Wrobel**
Catholic Charities
- Stephen Hill**
CORT

**IF YOU HAVE MORE THAN ONE
KCIFMA MAGNETIC NAME TAG, PLEASE
RETURN YOUR EXTRAS TO US AT THE
NEXT MEETING!**

For every 5 we receive back,
1 will be drawn to receive a prize!

**Program Meeting Costs
have gone up as of July 1, 2008**

- 10 Pack - 10 Program Meetings for \$180
(buy 9 programs, get 1 free)
- 5 Pack - 5 Program Meetings for \$90
(buy 4 programs, get 1 for 1/2 price)