

Newsletter

THE
FACILITATOR
The Newsletter for facility management professionals

- Resources
- Newsletter
- Education
- CFM
- Job Bank
- Contacts



President's Podium – Don't Be Sorry You Missed It!

It's almost here. September 23-25, Kansas City and our Chapter host the world class **IFMA WORLD WORKPLACE – NORTH AMERICA**. It behooves each and every chapter member to attend and participate in some manner in this most unforgettable event. Besides the obvious of showing the world FM leadership what a great place KC is and what a great chapter we have, you need to ask . . .

Contents

- [President's Po](#)
- [Facility Manag](#)
- [Worldwide](#)
- [PEP Meeting](#)
- [July Program F](#)
- [August Program](#)
- [World Workpla](#)
- [2001 Foundati](#)
- [How Well Do Y](#)
- [Doug Underwc](#)
- [CFM Question](#)
- [Quick Pix](#)

WHY DO I NEED TO BE THERE?

- To acquire new skills and techniques from the foremost FM and workplace experts.
- To pick up valuable ideas and tools that you can apply on the job.
- To share knowledge and common experiences with a community of workplace
- To discover fresh product and service solutions to your everyday challenges.
- To be inspired and motivated.
- To gain renewed appreciation for the various dimensions of our global workpl

If you haven't registered yet, it's not too late. You can call 713-623-4362 or go on www.worldworkplace.org.

If you can't attend the event, but can [volunteer](#) some time preparing for our guest Becky Beilharz at 913-362-1040.

Jack Tinnel and Teena Shouse are co-chairing the Chapter's participation. Working so far are: Rita Beebe, Sam Davidson, Jennell Hall, Susan Mosby, Allyn Starr, Ji Linda DeTienne, Alan Bram, Tony Mannella, Rick Bond, Scott Quarterson, Lee Sheryl Wolfe, Becky Beilharz.

World Workplace is an opportunity to learn about office environments, building



Mark Your Calendar

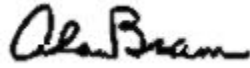
May 18, 2004
Tour of Kansas
Speedway

June 3, 2004
Annual Golf Outing
Painted Hills Golf
Course

July 20, 2004
So You Want to
Build a Building
Christ Community
Church

building maintenance, building services, E-FM/FM software, project and asset management, security, and more.

This is an opportunity to attend **World Workplace** at a low cost because you have no room expenses. Don't miss it or the great tailgate party being planned at Arrowhead.



Alan Bram, President
Kansas City IFMA Chapter



Facility Management Worldwid

By Te

It really does not matter what country you hail from, facility managers face the same challenges. However, they also share the common desire to be customer focused and make a difference in their daily work for their companies. In late June, I attended the IFMA World Workplace Europe Conference in Innsbruck, Austria. I experienced first hand the camaraderie of facility managers from 32 different countries. We shared experiences, ideas and ideas regarding the future state of facility management and how we all can impact it.

The classes, workshops and lectures focused on communication strategies, using technology to attract and retain employees, the Intelligent Client, facility technology, humanizing the workplace, and facility maintenance and preservation (very important when you have 500 year old buildings as many did). Even though so many countries were represented, a variety of cultures were mixed in, the sharing and dialogue went surprisingly well. Most sessions were in English (most of the participants definitely spoke better English than I do, Americans spoke their language!) but when not, we were provided translation help. Throughout the conference, I heard a few reoccurring themes: continuous improvement, measurement and feedback, flexibility to expand and consolidate, emphasis on simplifying work processes, automation through technology, and delivering excellent customer service. I told you our issues are worldwide!

The one element of the conference that impressed me the most is how hungry the world is for facility management knowledge. Many are looking to IFMA as the premier provider of this information and guidance. From my vantage point, I believe the support staff and the Board of Directors are up to the challenge. The board spent a lot of time continuing research and discussion on the Mega issues facing facility management and how IFMA will assist with those challenges in the future.

Best of all, I was afforded the opportunity to be reunited with many international friends I have made over the past two years. These relationships are kept alive due to email and I continue to learn from them and also share ideas that I glean from my daily interactions with fellow IFMA members. If at all possible, I would highly recommend you make plans to join us next year in Paris for World Workplace Europe 2002. Also, remember that I need YOU on the International Board of Directors and want to hear from you!

IFMA MEMBERS ARE INVITED
TO ATTEND THE AUGUST MEETING OF
PEP
PLANNING FOR EMERGENCY PREPAREDNESS

August 16, 2001

8:00 a.m. – Registration and Continental Breakfast

8:30 to 10:00 a.m. - How to Deal with Terrorism

Johnson County Community College
12345 College Boulevard, Room SCI-200
Overland Park, KS 66215

Federal Bureau of Investigation

Domestic/International terrorism

Threats/mitigation efforts as they relate to private businesses

Data/Internet/virus security as well as physical security of offices/employees
(subjects may change)

There is no cost to attend, but reservations are required.
RSVP to Linda DeTienne at National Catastrophe Restoration, Inc.
detienne@ncricat.com or 913-663-4111.

July Program Review
Breckon Sports Center Tour

By 1

If you were in the middle of a "Tornado Watch" or even a 7.5 magnitude earthquake, would you go? Well, if you were one of the fortunate 18 IFMA members and guests on the July 10th breakfast tour at Park University, you would have discovered that the Breckon Sports Center is one of the safest places on earth!

Park University's Vice President, Paul Rounds did a fantastic job informing Breckon Sports Center's newest tourists with new and fascinating details about this region's first of its kind. For instance, with space at a premium, this domed complex was built at just the cost of a similar building equal in size. Paul shared with our group that the price was about \$3 million for 37,000 square feet. The energy to maintain the heating was approximately half the cost for energy in a traditional constructed building. The temperature year round is approximately 65 degrees. If all the lights were turned off, enough natural light from the dome's six-foot wide skylight to maintain most day

functions. Last, but not least, the acoustics in the main gym are just phenomenal.

If you would like to inquire more about Park University's Breckon Sports Center, Park University's Paul Rounds at (816) 741-2000, or e-mail him at <http://www.park.edu>



(L to R) Jim Wilkinson, Becky Beilharz, Jennell Hall, and Matthew Elyachar



August Program Preview

Hurry up! Time is almost running out to sign up and join your IFMA friends to cheer the Royals onto victory over the Chicago White Sox. IFMA has reserved the Royal Field private area beyond the left outfield. We will have our own private entrance, concessions, toilet facilities, picnic tables with TVs and individual seats to watch the game. A meal of chicken, burgers, hot dogs, baked beans, potato salad and dessert is included. Soft drinks also included with beers at half price. You will have access to the public ballpark to our area are not permitted.

When: Tuesday, August 21.

Time: Gates open at 5:30 PM

Game starts at 7:05 PM.

Who: You and any number of guests.

Where: Royals Kauffman Stadium, past gate C.

Costs: \$35.00 per person, meal included.

Parking: Lots H or J, cost not included.

RSVP: A **MUST**, no later than August 7th.

Tickets will be distributed at the entrance gate.

Unclaimed tickets WILL be billed.

Questions? Becky Beilharz, Workplace Strategies

913-362-1040 or blbeilharz@aol.com.



**IFMA World Workplace 2001
Kansas City
September 23-25, 2001**

The international convention of IFMA members will be held in Kansas City this year with an expected draw of 8,000 attendees. There will be 80 educational sessions and an estimated more than 200 vendors displaying their products and services over the three-day event.

The Kansas City Business Journal has ranked World Workplace as the 7th largest convention to be held in Kansas City during 2001. Attendees will be facility management professionals from all across the nation and from international locations such as England, France, Germany, Canada, Mexico and more.

For more information, check out the IFMA web site at www.ifma.org.

Be A Sport!



Show Support for the IFMA Foundation! 2001 Foundation Gala The Pavilion at Arrowhead Stadium, Kansas City

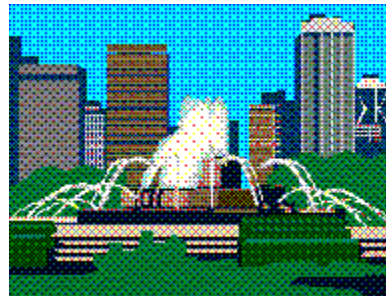
Saturday, Sept. 22

7 p.m. - 10 p.m.

You don't have to be a sports fan to enjoy all the activities we have planned for this unconventional "tailgate" party! Amazing Kansas City barbecue, a hot band featuring an eight-piece horn section, and interactive games, including basketball, football and baseball Pop-N-Shots and two-seat race car games!

The best part about this tailgater? You don't need a car! Busing is provided from all World Workplace convention hotels.

The Gala benefits the **IFMA Foundation**, supporting research and education to advance the field of facility management. Tickets: \$65 (U.S.) prior to event or \$75 (U.S.) at the door. For more information, call the IFMA Foundation at +1-713-623-4362 or e-mail foundation@ifma.org.



How Well Do You Know Kansas City?

To help us prepare for the 8,000+ visitors to Kansas City during the 2001 IFMA Workplace, September 23-25, let's study a little about our fine city.

This is the second of a three-part Q&A tool designed to test your historical know

Part II

16. Which Kansas Citian started the Pony Express?
17. Name the giant roller coaster at Fairyland Park.

18. What now stands where Woolworth's and the King Louie Plaza Bowl were?
19. What is the famous Scout holding in his left hand?
20. What locally brewed beer shared its name with a Kansas City hotel?
21. In what Irish tavern were slaves held in the basement?
22. What direction does the Hereford face?
23. Everyone knows the Rainmakers were formerly named, "Steve, Bob and Rick" what was their original name?
24. What Kansas City fountain graced the cover of the Saturday Evening Post?
25. Eddie Dwight, a graduate of Bishop Ward High School, went on to become what?
26. What skyscraper is built without structural steel?
27. What 1963 Shawnee Mission East graduate became Miss America?
28. What book was Ernest Hemingway working on while employed for the KC Star?
29. What is the shrimp served in at Antoine's on the Boulevard?
30. What monument in Kansas City, Kansas was erected in honor of "Its Citizens Answered Their Country's Call . . . "?

[Back to Top](#)

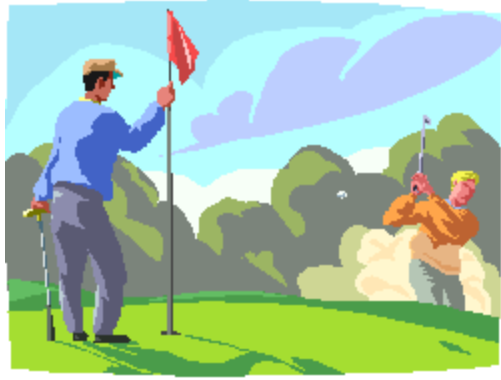
UTILITIES COUNCIL - DOUG UNDERWOOD GOLF TOURNAMENT

The Utilities Council and the IFMA Foundation each year jointly sponsor a golf tournament on the Saturday preceding World Workplace. The proceeds of the tournament are used to fund a scholarship, which is awarded each year at World Workplace (WWP) and pay the recipient to attend WWP. Additionally, a student luncheon during WWP is funded by the tournament proceeds.

This year's tournament will be held at Dub's Dread Golf Club in Kansas City, Kansas on Saturday, September 22 with a shotgun start at 8 a.m.

This is a great opportunity for companies to sponsor holes and gain national exposure. Facility Managers from across the country. It is also a great opportunity as players can talk with FMs from across the country in a relaxed and fun setting. If you would like to sponsor a hole, contact Richard Jackson at IFMA national. If you wish to play, there is a link to the national's website. You do not need a foursome to sign up.

I look forward to seeing many of you on the course. If you have any questions or need assistance, please contact Rick Bond.



Answers to Kansas City Quiz - Part II

16. Alexander Major
17. The Wildcat
18. Saks
19. A bow
20. Muehlebach
21. Kelly's
22. North
23. Steve, Bob and Dave
24. J.C. Nichols Fountain
25. First Black Astronaut
26. New York Life Building
27. Debbie Bryant
28. A Farewell to Arms
29. Dump trucks and tug boats
30. Rosedale Arch

International Facility Management Association's
World Workplace 2001
Will be held in Kansas City!

Plan now to be a part of this outstanding conference.

September 23-25, 2001

For more information contact
Becky Beilharz at (913)362-1040 or
Teena Shouse at (913)315-3046.



CFM'S KNOW - DO YOU?

Following is a question which might appear on the CFM (Certified Facility Mana

Can you answer it?

**Many facility air conditioning units contain ozone depleting CFC refrigerant
EPA regulations:**

- A. Prohibit producing CFC refrigerants R12 and R22
- B. Prohibit purchasing CFC refrigerants R11 and R12
- C. Prohibit producing CFC refrigerants R11 and R12
- D. Prohibit producing CFC refrigerants R11 and R22

Answer to last month's question: C. Non-slip quarry tile with tile coverings on wc

Quick Pix

Breckon Sports Center at Park University







[Welcome](#) [IFMA Board](#) [Corporate Sponsors](#) [National Website](#) [Resources](#) [Newsletter](#) [Education](#) [CFM](#)
[Contacts](#)

Web Site Development and Service provided by [21st Century Solutions, Inc.](#)
Powered by [siteLaunch](#) technology
Copyright (c) 2000-2004 [www.kcifma.com](#) and [21st Century Solutions, Inc.](#)
All rights reserved.